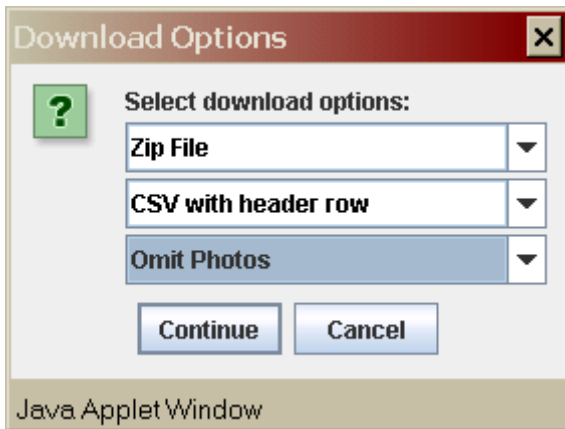


Log onto MiRealSource

Run a Search for the Subject Market area:

In the upper left hand corner, there's a drop down menu. Select "ASCII Download". Run your Search.

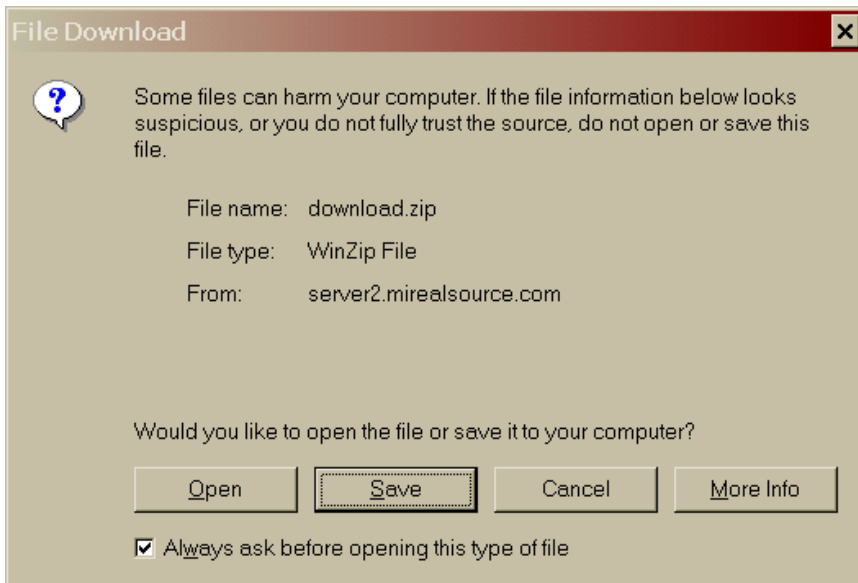


You'll get this screen once you Run Search and Click Continue.

Select the fields as I have them above.

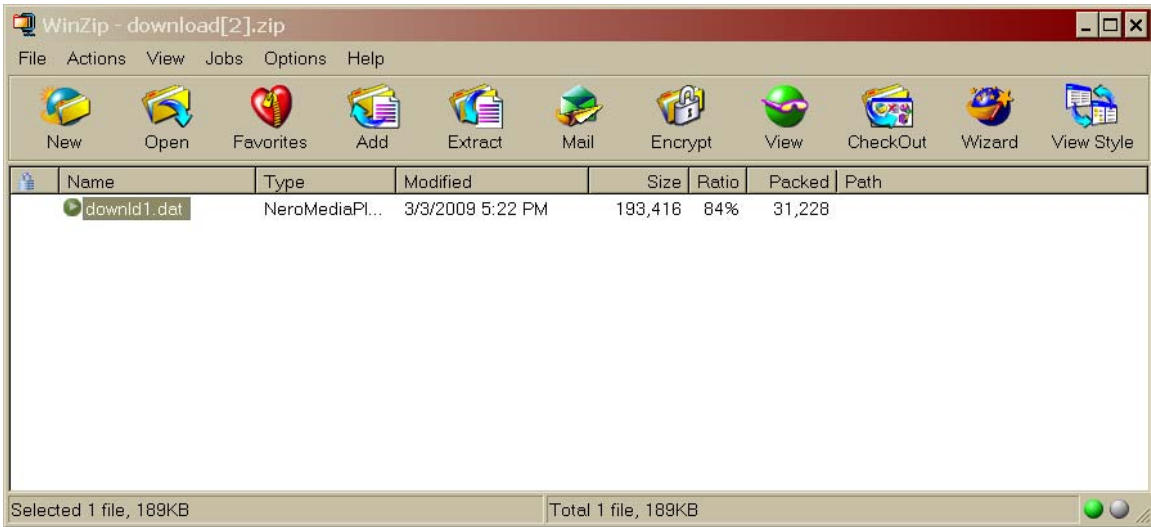
Zip File; CSV with header row; Omit Photos

Click Continue and you'll get the following:

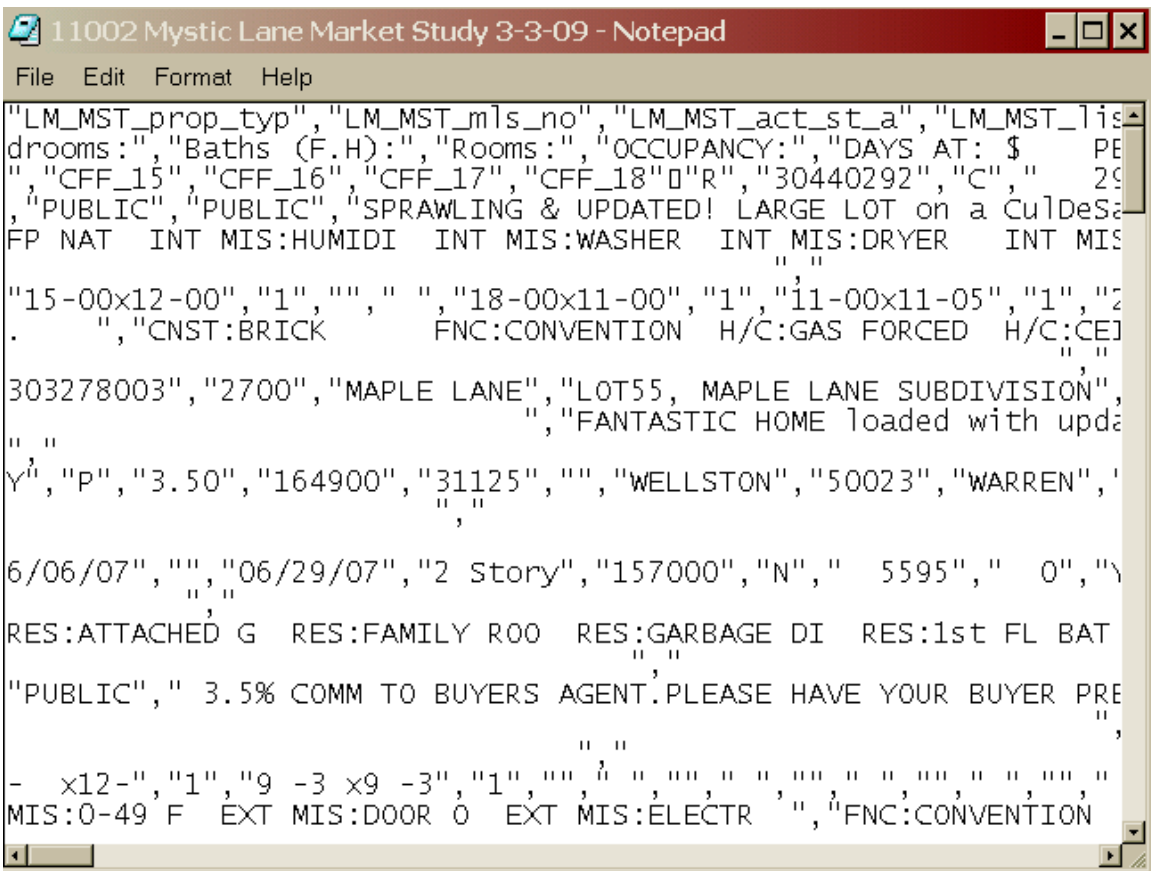


Choose OPEN

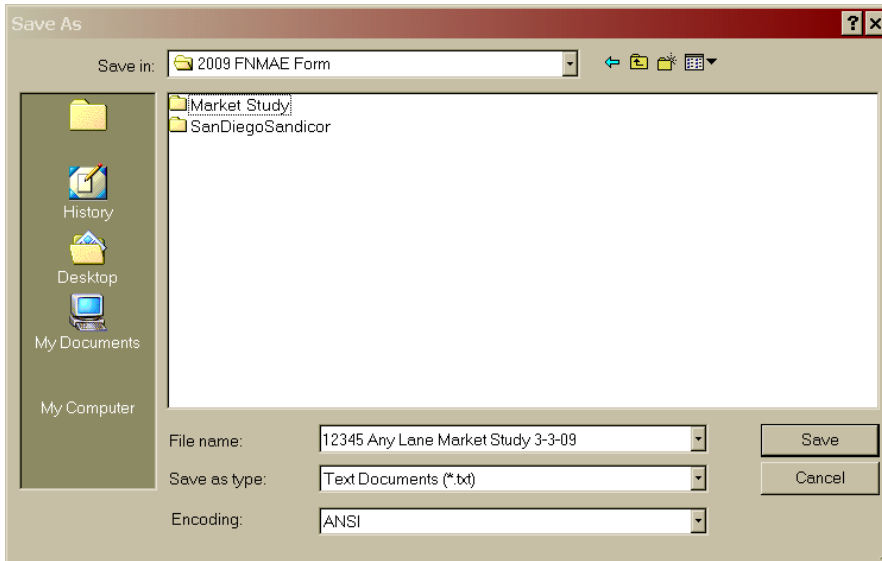
You'll get this Screen:



Right Click on the File 'downld.dat' and Choose Open With 'Notepad'.

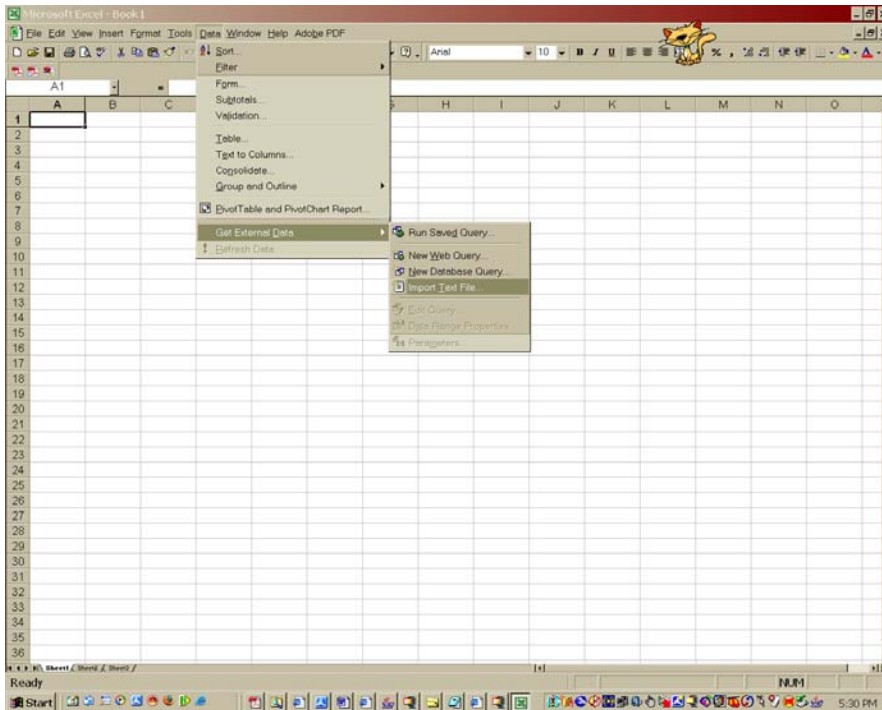


Save this File and call it the address of your Subject. See next page.



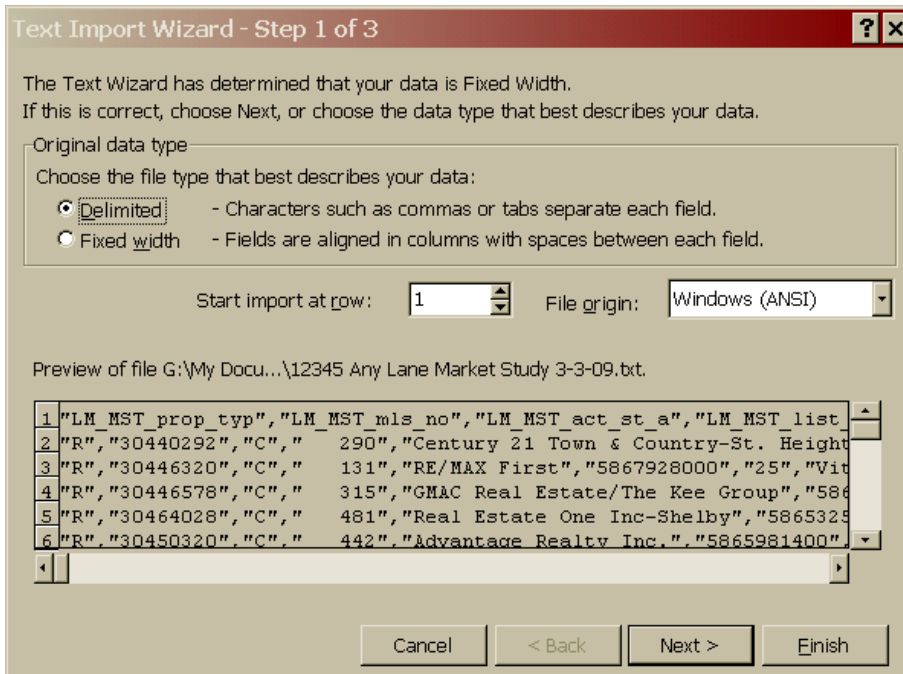
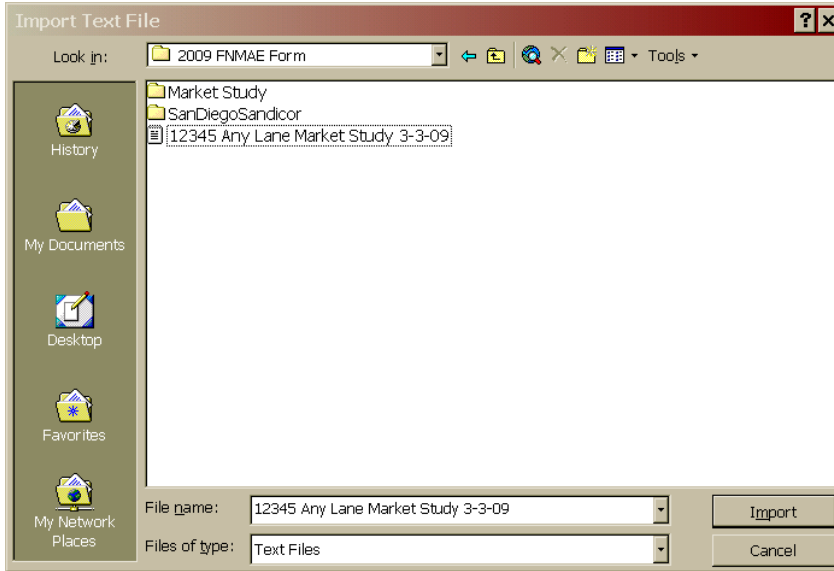
You'll be saving this as a TXT file.

Open Excel:

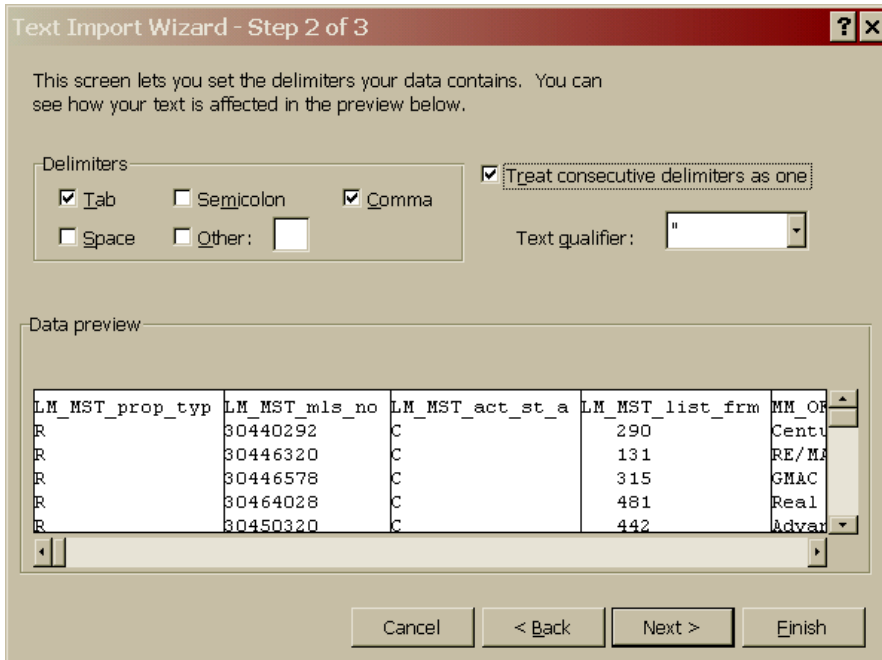


Click on DATA and go to the Drop Down GET EXTERNAL DATA and select IMPORT TEXT FILE – the one you just created.

Select the File – then click IMPORT.

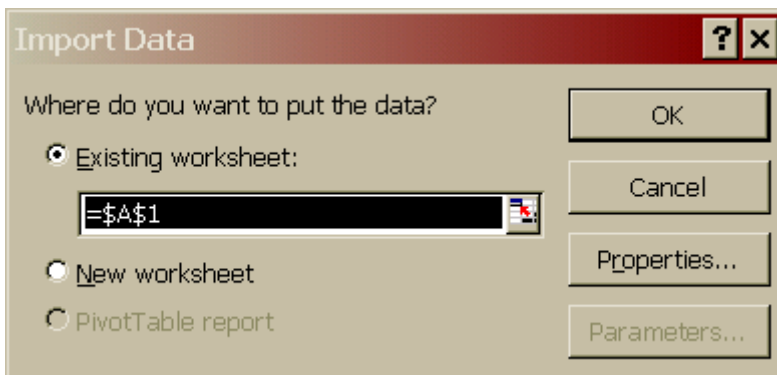


In this Screen, click the Delimited box and click NEXT



In this screen click COMMA and TREAT Consecutive delimiters as one
Then click Finish.

You may get the following Screen in Excel 2000



Click OK. It should now populate the data into your Excel Worksheet.

You have more info here than you need. You'll have to delete the columns that you don't need. You should only have the remaining columns of DATA A-L.

See next page for the condensed breakdown.

Now you have a spreadsheet with All the Data from MiRealSource.

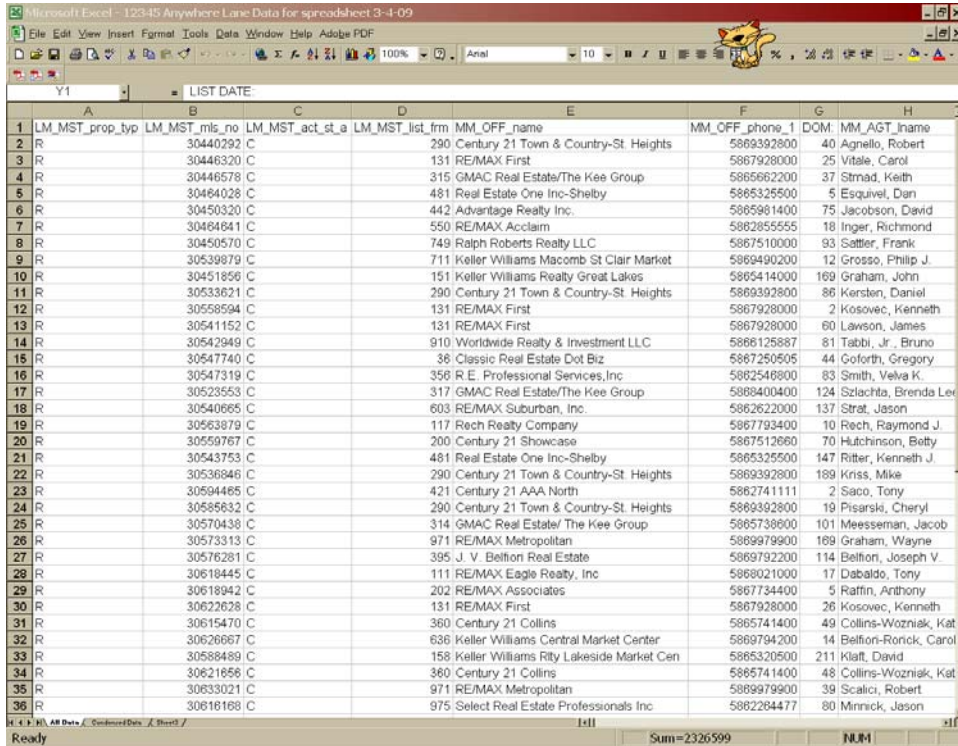
See this Excel Sheet with the tabs on the bottom:

Name Tab one “All Data”

Name Tab two “Condensed Data”

File Save this Sheet as the Address – spreadsheet.

Here’s how it should look:



	A	B	C	D	E	F	G	H
1	LM_MST_prop_typ	LM_MST_mls_no	LM_MST_act_st_a	LM_MST_list_fm	MM_OFF_name	MM_OFF_phone_1	DOM	MM_AGT_iname
2	R	30440292	C	290	Century 21 Town & Country-St. Heights	5869392800	40	Agnello, Robert
3	R	30446320	C	131	RE/MAX First	5867928000	25	Vitale, Carol
4	R	30446578	C	315	GMAC Real Estate/The Kee Group	5865662200	37	Strnad, Keith
5	R	30484028	C	481	Real Estate One Inc-Shelby	5865325500	5	Esquivel, Dan
6	R	30450320	C	442	Advantage Realty Inc.	5865981400	75	Jacobson, David
7	R	30484841	C	550	RE/MAX Acclaim	5862855555	18	Inger, Richmond
8	R	30450570	C	749	Ralph Roberts Realty LLC	5867510000	93	Sattler, Frank
9	R	30539879	C	711	Keller Williams Macomb St Clair Market	5869490200	12	Grosso, Philip J.
10	R	30451856	C	151	Keller Williams Realty Great Lakes	5865414000	169	Graham, John
11	R	30533621	C	290	Century 21 Town & Country-St. Heights	5869392800	86	Kersten, Daniel
12	R	30558594	C	131	RE/MAX First	5867928000	2	Kosovec, Kenneth
13	R	30541152	C	131	RE/MAX First	5867928000	60	Lawson, James
14	R	30542949	C	910	Worldwide Realty & Investment LLC	5866125887	81	Tabbi, Jr., Bruno
15	R	30547740	C	36	Classic Real Estate Dot Biz	5867250505	44	Goforth, Gregory
16	R	30547319	C	356	R. E. Professional Services, Inc	5862546800	83	Smith, Veva K.
17	R	30523553	C	317	GMAC Real Estate/The Kee Group	5868400400	124	Szlachta, Brenda Lee
18	R	30540665	C	603	RE/MAX Suburban, Inc.	5862622000	137	Strat, Jason
19	R	30563879	C	117	Rech Realty Company	5867793400	10	Rech, Raymond J.
20	R	30559767	C	200	Century 21 Showcase	5867512660	70	Hutchinson, Betty
21	R	30543753	C	481	Real Estate One Inc-Shelby	5865325500	147	Ritter, Kenneth J.
22	R	30536846	C	290	Century 21 Town & Country-St. Heights	5869392800	189	Kriss, Mike
23	R	30594485	C	421	Century 21 AAA North	5862741111	2	Saco, Tony
24	R	30585632	C	290	Century 21 Town & Country-St. Heights	5869392800	19	Pisarski, Cheryl
25	R	30570438	C	314	GMAC Real Estate/ The Kee Group	5865738600	101	Meesseman, Jacob
26	R	30573313	C	971	RE/MAX Metropolitan	5869979900	189	Graham, Wayne
27	R	30576281	C	395	J. V. Belfiori Real Estate	5869792200	114	Belfiori, Joseph V.
28	R	30619445	C	111	RE/MAX Eagle Realty, Inc	5868021000	17	Dabaldo, Tony
29	R	30618942	C	202	RE/MAX Associates	5867734400	5	Raffin, Anthony
30	R	30622628	C	131	RE/MAX First	5867928000	26	Kosovec, Kenneth
31	R	30615470	C	360	Century 21 Collins	5865741400	49	Collins-Wozniak, Kat
32	R	30626667	C	636	Keller Williams Central Market Center	5869794200	14	Belfiori-Ronick, Carol
33	R	30589489	C	158	Keller Williams Rity Lakeside Market Cen	5865320500	211	Klatt, David
34	R	30621656	C	360	Century 21 Collins	5865741400	48	Collins-Wozniak, Kat
35	R	30633021	C	971	RE/MAX Metropolitan	5869979900	39	Scalici, Robert
36	R	30616168	C	975	Select Real Estate Professionals Inc	5862264477	80	Minnick, Jason

Note the tabs at the bottom of this page: You’re looking at the “All Data” page above:

	E	F	G	H	I	J	K	L	M	N	O	P	Q
1	APPX SQFT	Bedrooms	Baths (F.H)	LISTING PRICE	CLOSING PRICE	LIST DATE	CLOSING DATE	DOM					
2	2000	3	2.1	214900	200000	2/12/2007	4/12/2007	40					
3	1966	3	2.1	214900	190000	3/8/2007	4/19/2007	25					
4	2700	4	2.1	257900	250000	3/8/2007	5/23/2007	37					
5	1228	3	1	164900	164900	5/10/2007	6/13/2007	5					
6	1728	4	1.1	160000	157000	3/23/2007	6/29/2007	75					
7	1757	3	1.1	154900	154900	5/11/2007	8/29/2007	18					
8	1100	3	1	149500	140000	3/24/2007	7/12/2007	93					
9	960	3	1	129900	122000	8/1/2007	9/12/2007	12					
10	2246	4	3.1	219900	200000	3/29/2007	10/4/2007	169					
11	1800	3	2	169899	168500	7/16/2007	10/11/2007	86					
12	1342	3	1.1	114500	112500	10/9/2007	11/6/2007	2					
13	1902	4	2.1	172000	169500	8/6/2007	11/9/2007	60					
14	2700	3	2.2	290000	245000	8/11/2007	11/16/2007	81					
15	1419	3	1.1	113900	116000	8/29/2007	11/20/2007	44					
16	2220	4	2.1	234500	215000	8/27/2007	12/12/2007	83					
17	1810	3	2	148500	142000	8/12/2007	12/14/2007	124					
18	1579	3	2	140000	127000	8/3/2007	1/1/2008	137					
19	1914	4	2.1	129900	128000	10/29/2007	1/14/2008	10					
20	960	3	1	129900	129900	10/11/2007	1/18/2008	70					
21	1807	4	2.1	139900	130000	8/13/2007	1/25/2008	147					
22	2200	4	2.1	199900	192500	7/23/2007	2/25/2008	189					
23	1900	4	1.1	1400	1400	3/5/2008	3/14/2008	2					
24	1773	4	1.1	154900	140250	1/30/2008	3/17/2008	19					
25	3070	3	2	199000	198300	11/21/2007	4/4/2008	101					
26	1085	3	1	84900	80000	12/5/2007	6/20/2008	169					
27	1600	3	3	201900	201900	12/18/2007	6/23/2008	114					
28	1783	3	1	1400	1300	6/9/2008	7/9/2008	17					
29	1838	3	3	149900	150000	6/11/2008	7/29/2008	5					
30	1773	3	2	128900	110000	6/27/2008	8/1/2008	26					
31	1421	3	2	84500	88800	5/29/2008	8/22/2008	49					
32	1614	3	1.1	175000	160000	7/14/2008	8/28/2008	14					
33	2100	4	2	164900	168000	2/11/2008	9/12/2008	211					
34	856	3	1	59900	60000	6/21/2008	9/15/2008	48					
35	900	3	1	900	850	8/9/2008	9/19/2008	39					
38	1319	3	1	64500	44625	6/1/2008	10/4/2008	80					

Now you're looking at the Condensed Data Sheet.

Here's how we get there:

The fields we need to retrieve are the following on the All Data Page and transferred to the Condensed Data Sheet in order.

Field	Column	Field	Column
List Number	B	Copy Cell into Field	A
Status	C	Copy Cell into Field	B
Address #	AJ	Copy Cell into Field	C
Address Street	AL	Copy Cell into Field	D
Total Square Feet	BF	Copy Cell into Field	E
Bedrooms	BV	Copy Cell into Field	F
Baths.Lavs	BW	Copy Cell into Field	G
List Price	AI	Copy Cell into Field	H
Sale Price	P	Copy Cell into Field	I
List Date	Y	Copy Cell into Field	J
Off Market Date (Closed Date)	N	Copy Cell into Field	K
DOM Days on Market	G	Copy Cell into Field	L

Now on your condensed page – copy the fields A-L and paste into the worksheet as you did for the Realcomp data. That should do it!